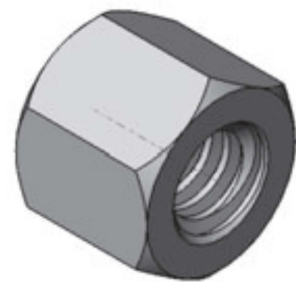
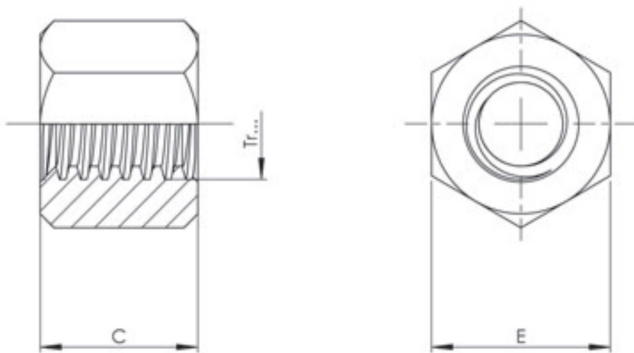


Data sheet hexagonal steel nut blank, SKM

Suitable for clamping operations, manual positioning and mounting.
Not suitable for motion drives because the steel/steel friction tends to seizure.

Further processing: The thread serves as reference for precise machining and assembly.

Material: cutting-free steel 1.0718 (9 SMn 28K).



Type	E [mm]	C [mm]	Weight [kg]
SKM Tr 10x2	17	15	0,022
SKM Tr 10x3	17	15	0,022
SKM Tr 12x3	19	18	0,028
SKM Tr 14x3	22	21	0,044
SKM Tr 14x4	22	21	0,044
SKM Tr 16x4	27	24	0,084
SKM Tr 18x4	27	27	0,086
SKM Tr 20x4	30	30	0,17
SKM Tr 22x5	30	33	0,17
SKM Tr 24x5	36	36	0,20
SKM Tr 26x5	26	39	0,20
SKM Tr 28x5	41	42	0,30
SKM Tr 30x6	46	45	0,43
SKM Tr 32x6	46	48	0,42
SKM Tr 36x6	55	54	0,73
SKM Tr 40x7	65	60	1,3
SKM Tr 50x8	75	75	1,8
SKM Tr 60x9	90	90	2,8
SKM Tr 70x10	90	105	3,1